

LIBERTY BRINGS OUT NEW SNAPPY SPORTSMAN'S CAR

A sportsman's car of the most advanced type is just announced by the Liberty Motor Car company, together with the information that first shipments of the new car are now being made to distributors and dealers.

The new car is a pronounced departure from the standard type of speedster in that its appointments and fittings are phenomenal not only for their quality, but for their completeness, according to Julian Holmes of the Holmes Motor Sales company, head of the distributing of the Liberty six. "There are nearly

fifty features on the new car which are not found on the standard touring car or speedster," said Mr. Holmes.

One of the most noticeable features of the new car is a newly designed windshield, the side arms and base of which are aluminum. It provides an ingenious method for ventilating the driver's compartment and embodies novel built-in "courtesy" lights in the lower corners. A one-piece glass is used which is fitted with a cleaner.

The car comes in two special body colors with upholstery in the finest grade of two-tone Spanish leather in shades to match. Steel wheels also are standard equipment, finished in tones to harmonize with the body.

Some of the exceptional features include nickel-plated lamps and radiator, motor, clock, trouble light, snubbers, bumpers, special fenders, aluminum steps, fully lined top, special steering wheel and numerous other examples of tasteful designing.

Don't use the choke except when necessary.

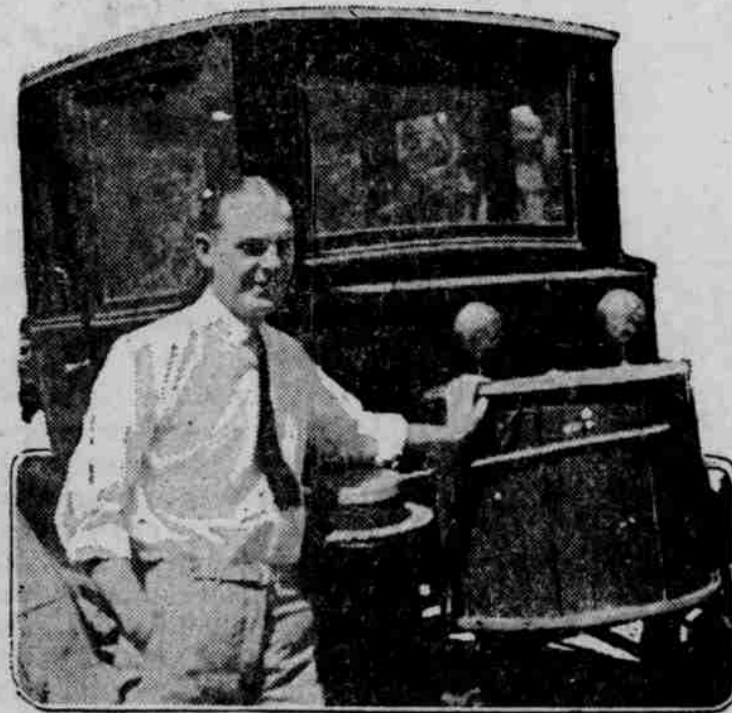
SUBSTANTIAL CUT IN PIERCE-ARROW PRICE ANNOUNCED

A substantial reduction in the prices of its touring car models effective after September 1, and a reduction on the prices of its truck models, effective immediately, has been announced by George W. Miller, president of the Pierce-Arrow Motor Car company.

The new price of the standard seven-passenger touring car is \$6,500 at the factory; the enclosed car prices being graded proportionately.

The new prices of its truck models are: \$4,850 for the five-ton size; \$4,350 for the 2½-ton and \$3,200 for the 2-ton.

ELECTRICITY "TAKEN FROM AIR" DRIVES AUTOMOBILE



C. E. AMMANN AND HIS "ATMOSPHERIC GENERATOR" ATTACHED TO AN ELECTRIC AUTOMOBILE

DENVER, Colo., Aug. 28.—Demonstrations are being made on the streets of Denver of a new electric generator that is claimed by the inventors to take electricity from the air.

The inventors are J. E. Ammann of Denver, and his brother, C. E. Ammann of Spokane, Wash.

To demonstrate, the brothers borrowed an old electric auto, took out the batteries, and after roping their new "atmospheric generator" fast, they got in and rode off at high speed.

"There is nothing inside the drum that moves; the contents consists only of iron, wire and minerals," says C. E. Ammann.

"It can be used to drive any electrical apparatus and can be made in any size."

The brothers are closely guarding their secret, and even take their "brain-child" when it is not in use, to their room in the Argonaut hotel. So far the brothers have not offered to sell their proposition.

Electrical men in Denver are waiting "to be shown," but they grant the thing works.



Examine the Tread on This Tire

The tread of a tire is the first line of defense against bad riding and rough roads. The tread must hold its own against all road surface to insure easy and safe travel.

Kokomo treads are remarkably tough. Sharp stones, nails, pieces of glass do not penetrate Kokomo treads. If an abrasion is made, the elastic, live, tread-

rubber closes instantly and bars the entrance of sand, water or oil.

The twin-grip design serves a two-fold purpose. The tire rolls on the center rib as easily as a ball bearing. The sharp angled wedges give protection against side-slip.

Ask about the economy of complete Kokomo equipment for city or country driving.

LONG-LIFE Kokomo TIRES AND TUBES

NEW PRICE \$1335

NEW LIGHT-SIX
Five-Passenger, 40-horsepower, 112-inch wheelbase
\$1335 f. o. b. South Bend

THE unprecedented popularity of the **NEW LIGHT-SIX** can be traced to the fact that it represents a degree of automobile value that the public has sought for years. It is built complete in the great Studebaker factories in South Bend. And the best indication of its real worth today, is to be found in the fact that, in the first six months of 1921, Studebaker (with the exception of one manufacturer of a well known and very low-priced car) produced and sold more cars than any other manufacturer in the country.

This is a Studebaker Year

M. P. BARRET, Inc.

125 North First Street

Phone 4419

NEW PRICES OF STUDEBAKER CARS
f. o. b. Factories, effective June 1st, 1921

Touring Cars and Roadsters	Coupe and Sedans	Price
LIGHT-SIX 2-PASS. ROADSTER	LIGHT-SIX 2-PASS. COUPE-ROADSTER	\$1695
LIGHT-SIX TOURING CAR	LIGHT-SIX 5-PASS. SEDAN	1995
SPECIAL-SIX 2-PASS. ROADSTER	SPECIAL-SIX 4-PASS. COUPE	2450
SPECIAL-SIX TOURING CAR	SPECIAL-SIX 5-PASS. SEDAN	2550
SPECIAL-SIX 4-PASS. ROADSTER	BIG-SIX 4-PASS. COUPE	2850
BIG-SIX TOURING CAR	BIG-SIX 7-PASS. SEDAN	2950

ALL STUDEBAKER CARS ARE EQUIPPED WITH CORD TIRES

AUTO INSURANCE AND LEGAL AID ADDED BY A. A. A.

That the American Automobile Association's recent decision to increase its individual membership dues to \$100 has not appreciably lessened the number of new applications nor deterred old members from renewing is well evidenced by the huge daily in-flow of remittances, according to a report from A. A. A. headquarters at Washington.

The decision to increase dues was reached at the last meeting of the A. A. A. executive board, and was prompted by the need of more money to finance the activities of the organization. In setting a figure for the increased dues, it was the aim of the executive committee not only to obtain sufficient revenue to take care of the present overhead expenses but to allow a margin for a widening of the organization's activities.

In addition to enlarging its road charting, map-making and legislative activities it is planned to add several features frequently urged by members and which will make strong appeal to motorists generally. Among these are the establishment of an automobile insurance department and a legal aid bureau. Also there will be renewed intensive effort to establish national motoring reciprocity and to obtain uniform motor vehicle traffic laws.

G. M. C. ANNOUNCE PRICE REDUCTIONS IN TRUCK MODELS

Among price revisions downward in the automotive world this year, of greatest importance to the business interests is the sweeping reduction in the selling price of GMC trucks, announced by the General Motors Truck Company, Wednesday, August 17.

This is made possible by greater production in all capacities and the flat cut of \$500 in the instance of the one-ton GMC is the sensation of the trade. This truck, known as Model K-16, is the outgrowth of the model that was made a standard of the United States army. The service of this particular chassis, bearing am-

Read These ABC Rules About Batteries

Adjustment and oiling make your bearings last longer—proper inflation and careful driving make your tires last longer—cleaning makes your spark plugs serve longer and better. It is worth remembering that there are rules just as simple for making your battery last longer and serve more faithfully.

Here are three rules in ABC form:

- 1—Put in water regularly and keep up the charge.
- 2—Come in every two weeks for battery service.
- 3—And when your present battery wears out, buy a Willard Threaded Rubber Battery—the only battery with Threaded Rubber Insulation between the plates.

There is only one battery good enough for us to back by our unqualified recommendation—that's the Willard Threaded Rubber Battery. Come in—and we'll show you some records it has made right here.

AUTHORIZED SERVICE
Electrical Equipment Company of Arizona
Successors to
WESTERN MACHINERY CO.
326-324 East Washington Street

Willard Batteries

balance bodies was the highlight of motor efficiency, during the war.

The current model presents many refinements. Principal among them is the new GMC engine with removable cylinder walls, proven by comprehensive tests to be without a superior for its purpose. Also, this truck has electric lights and starter, larger brakes, pressure lubricating system, cord tires and many desirable betterments.

The sturdiness of this truck is in line with GMC policy. It is built in an exclusive truck factory and not from passenger car parts. Business men who have used earlier models are loud in their praise of this truck, on the ground that it is absolutely dependable and economical.

Commercial uses for this model are many. It fits all forms of city delivery, especially where speed is a requisite. It is admirable for the farmer, conserving his time. No chassis is better suited for a suburban or school bus, for an ambulance and for the fire and police departments.

Wheels should respond to the turning of the steering wheel with but little lost motion.

"New Cars at Less Than Cost"

\$1,000.00

Buy a brand new standard light six cylinder car that sells regularly for \$1,625.00 f. o. b. Phoenix. Positive saving of \$625.00 on a new standard automobile. The factory has authorized us to sell these cars rather than ship them to some other point—we are giving the Phoenix public the benefit of the cost of re-shipment and the regular dealer's profit. We are also authorized to make special terms to responsible parties. No trade-ins considered on these cars. There are only three to be sold.

NEW 1½-2 TON TRUCKS AT MUCH LESS THAN DEALER'S COST

The same manufacturer has three 1½-2 ton trucks in Phoenix they desire to sell rather than re-ship. These are high-grade standard trucks that have always given excellent satisfaction in Arizona. Here is an opportunity to make a real substantial saving on a high-grade commercial truck. If you do not need the truck now it would pay you to buy and store for future use—

\$2,500.00 truck chassis only, with seat	\$1,600.00
\$2,700.00 truck chassis with cab, seat, windshield, windshield curtains	\$1,750.00
\$3,000.00 truck chassis with cab, wind shield, windshield curtains, open express body	\$1,850.00

All of the above are 1½-2 ton trucks, have cord tires 40x8 on the rear. This offer will hold good, not only on the trucks but on the passenger cars, for a few days only. If they are not sold within the next two or three days orders have been given to ship them out of this territory.

"TWO REAL BARGAINS IN HIGH-GRADE CARS"

Dodge Coupe, elegant shape, good tires, good paint, extra tire, wire wheels, an ideal car for private use or professional use—\$1,150.00.

1921 Nash 7 passenger touring car—\$1,225.00. Good tires, spare tire and other extra equipment. Car has been checked over carefully and is in good condition. Has seat covers and will make an ideal car for either private use or for rent for taxi service. Special terms on either the Nash or Dodge Coupe.

Then we have a Studebaker Big Six at \$1,150.00.

Dodge Commercial Truck, \$1,500.00.

Ford Coupe \$475.00.

Hudson Super Six, 7 passenger, \$1,150.00.

1921 Essex Touring car, \$1,250.00.

STOP—LOOK—LISTEN

HUDSON NOW \$2280.00 Was \$2985.00 (1920 Price) F. O. B. Phoenix YOU SAVE \$705.00	ESSEX NOW \$1660.00 Was \$2080.00 (1920 Price) F. O. B. Phoenix YOU SAVE \$420.00
---	--

DULMAGE and DUNBAR

distributor

HUDSON ESSEX TWIN CITY TRACTORS

METROPOLITAN

FIRE-PROOF STORAGE GARAGE
Central and Madison Telephone 4008

CHANDLER SIX

NOW

\$1785

Down to the 1913 Price

August 1913
\$1785

August 1921
\$1785

What the Chandler Motor Means to You

It means much to you. It is the exclusive Chandler motor, found under the hood of no other car. It was designed by Chandler engineers eight years ago, and has been developed and refined by the same engineers through all these years.

Thousands of owners named it "the Marvelous Motor." And it is distinctly that. The Chandler motor is alive with power. It furnishes all the speed that any right-minded driver could ever want to use. It readily climbs in high any steep hill or long mountain ascent that any car can climb. It pulls, easily and smoothly, through deep sand or mud.

You can throttle it down to three miles an hour in congested traffic and step away like a flash from less lively cars. Its flexibility is not surpassed.

The Chandler motor never overheats, no matter how hot the day, how hard the pull or how fast the speed.

Before You Buy Any Other Car, See the Chandler

Seven-Passenger Touring Car, \$1785 Four-Passenger Roadster, \$1785 Two-Passenger Roadster, \$1785
Four-Passenger Dispatch Car, \$1865
Seven-Passenger Sedan, \$2885 Four-Passenger Coupe, \$2785 Limousine, \$3385
(Prices f. o. b. Cleveland, Ohio)

Cord Tires Standard Equipment

CAL MESSNER

Fourth Ave. and Adams St. Phones 1386-4218

THE CHANDLER MOTOR CAR COMPANY, CLEVELAND, OHIO